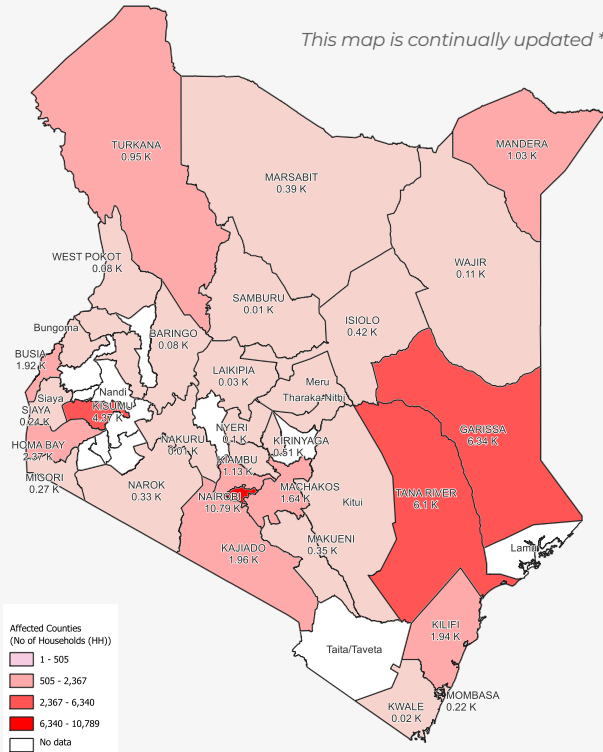
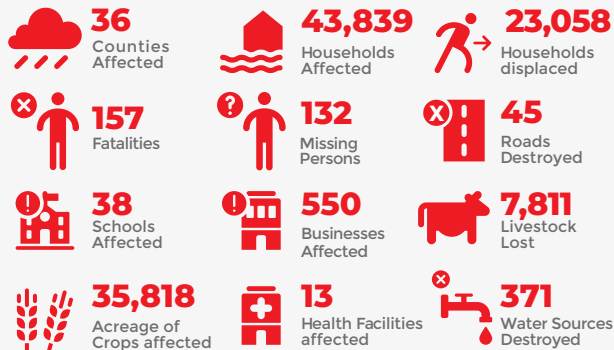


## AFFECTED AREAS

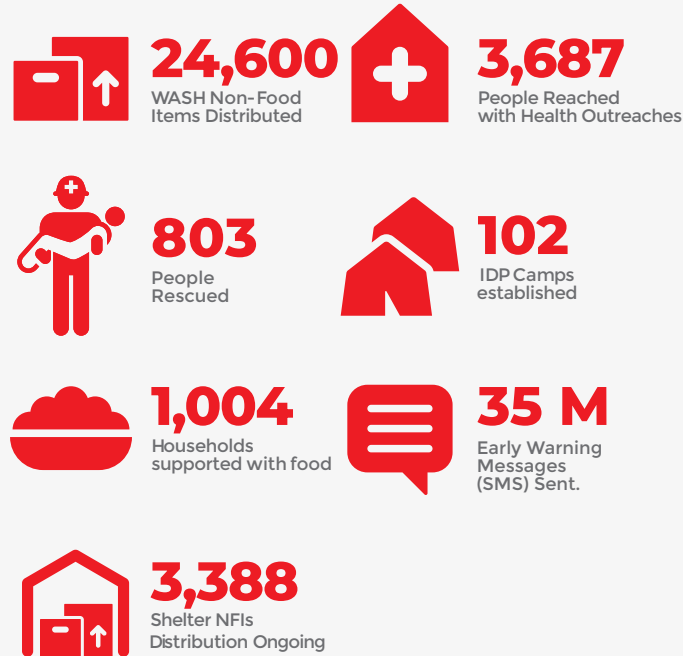
This map is continually updated \*



## FLOODS IMPACT



## OUR INTERVENTIONS

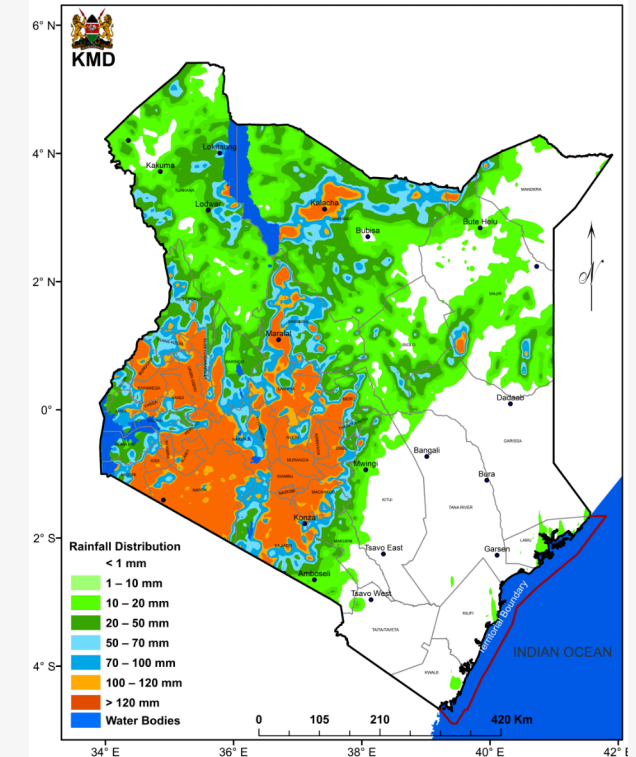


## WHAT TO EXPECT

Rainfall is expected to continue over several parts of the country. Heavy rainfall events are likely to occur in some parts of the Nyandarua, Laikipia, Nyeri, Kirinyaga, Murang'a, Kiambu, Meru, Embu, Tharaka-Nithi, Nairobi, Nandi, Kericho, Bomet, Trans-Nzoia, Uasin-Gishu, Elgeyo-Marakwet and West-Pokot, Kakamega, Vihiga, Bungoma, Siaya, Kisumu, Homabay, Busia, Migori, Kisii, Nyamira), Narok, Baringo, Nakuru, Machakos, Kitui, Makueni, Kajiado and Taita-Taveta, Turkana and Samburu, Marsabit, Mander, Wajir, Garissa and Isiolo counties.

**IMPACTS**  
**Flooding** is expected in low-lying areas, those in flood plains as well as in urban areas with poor drainage. **Landslides** may occur on steep slopes where soils become saturated. The expected heavy rainfall is likely to be accompanied by **strong winds, thunder and lightning**. **Large waves** and strong winds may affect marine activities.

## RAIN FORECAST 30th Apr -6th May



## ADVISORY

Source: KMD

The public is advised to avoid driving through or wading in fast moving water. Those living within flood plains should remain alert as flood waters may appear even in the absence of rain.

Road-users, aviators and boat operators are advised to exercise caution.

The public are advised to avoid sheltering under trees and metallic structures to minimize exposure to lightning strikes. They are also advised to be cautious since the forecasted strong winds may damage roofs, trees, billboards.

Warning in place and marine activities on hold.

Call KRCS toll free number 1199 for emergency support.